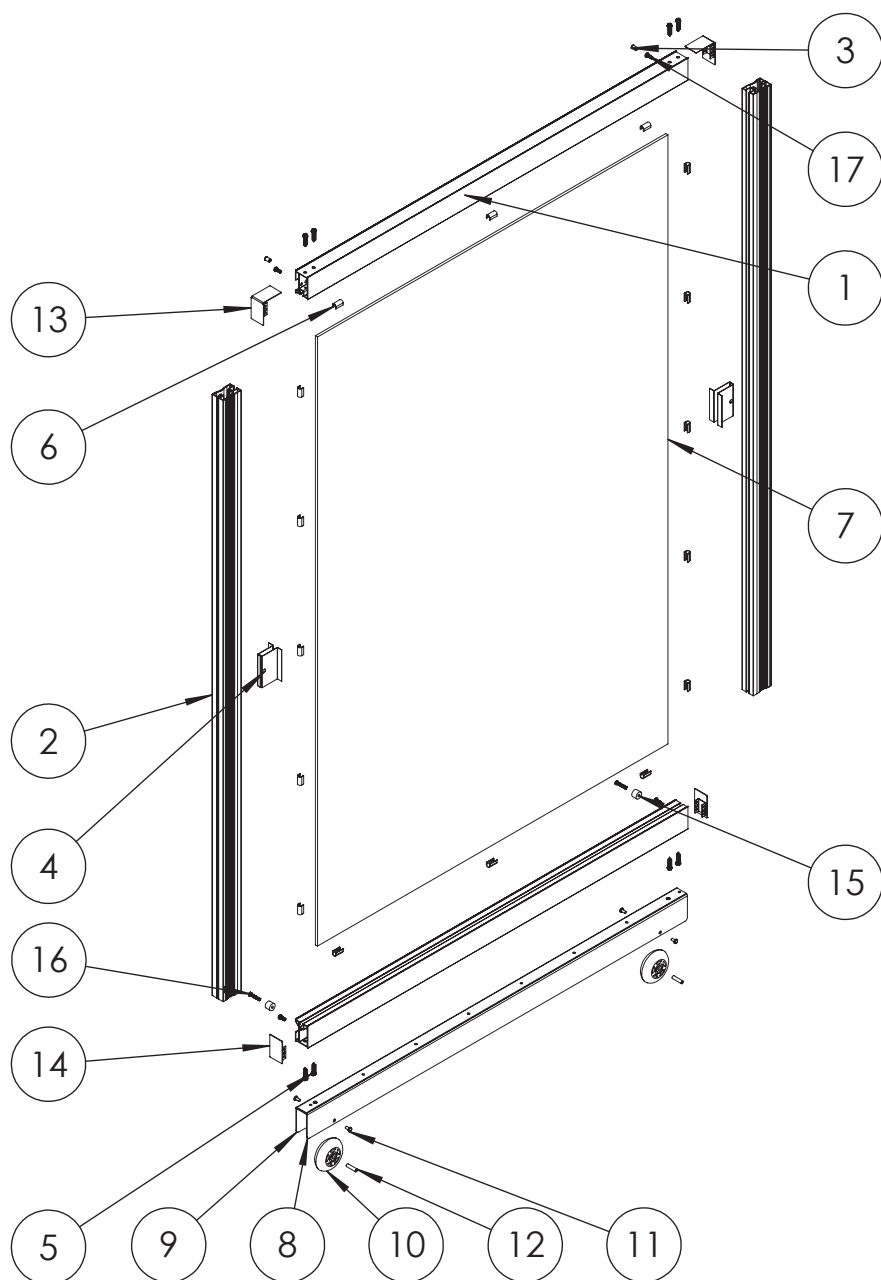


Axel

Sliding doors

Product disassembly guide



No.	Description	Qty.	Mat.
1	Rail	2	Aluminum
2	Post	2	Aluminum
3	Nut	4	Steel
4	Pull	4	Steel
5	Screw	8	Steel
6	Gasket	16	Rubber
7	Plexiglass	1	Plastic
8	Door support on casters	1	Steel
9	Door support on casters	1	Steel
10	Caster	2	Variable
11	Mechanical screws	4	Steel
12	Caster hardware	2	Steel
13	Finishing cap	2	Steel
14	Finishing cap	2	Steel
15	Tile stop	2	Plastic
16	Screw	2	Steel
17	Screw	4	Steel

Tools



Screwdriver

1. Unscrew the 2 screws (16) to remove the tile stops (15).
2. Unscrew the 4 screws (17) to remove the finishing caps (13 and 14).
3. Unscrew the 8 screws (5) to disassemble the rails and posts (1 and 2) holding the plexiglass (7).
4. Unscrew the 2 screws (11) to remove the casters (10).